



ENGR 1111-ASTRO 4

Imaging Team 3

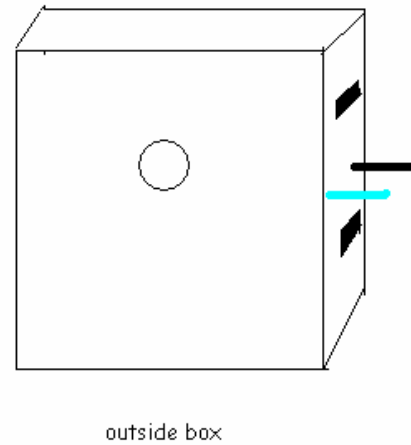
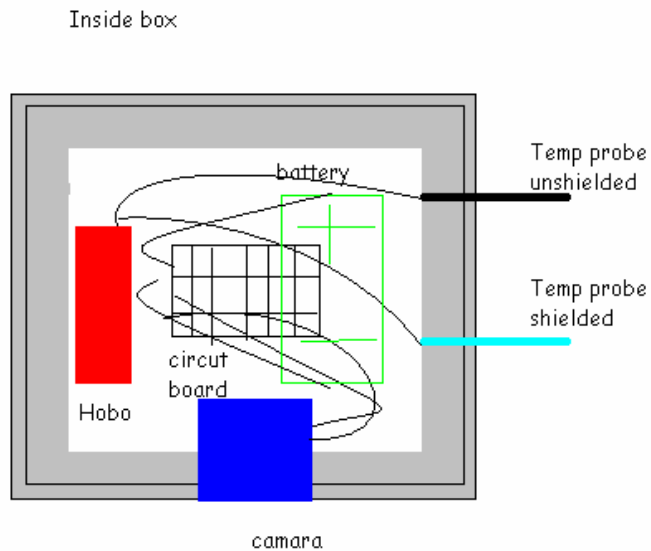
By

Chris, Grant, Jacob, Justin

Team Overview

- Chris is an Aerospace/Mechanical Engineer
- Grant is an Aerospace Engineer with a Russian Minor
- Jacob is an Aerospace/Mechanical Engineer
- Justin is an Aerospace Engineer and Pre-Med
- The payload is Double Quarter Pounder with Cheese

Payload Design



Inside Design

Outside Design

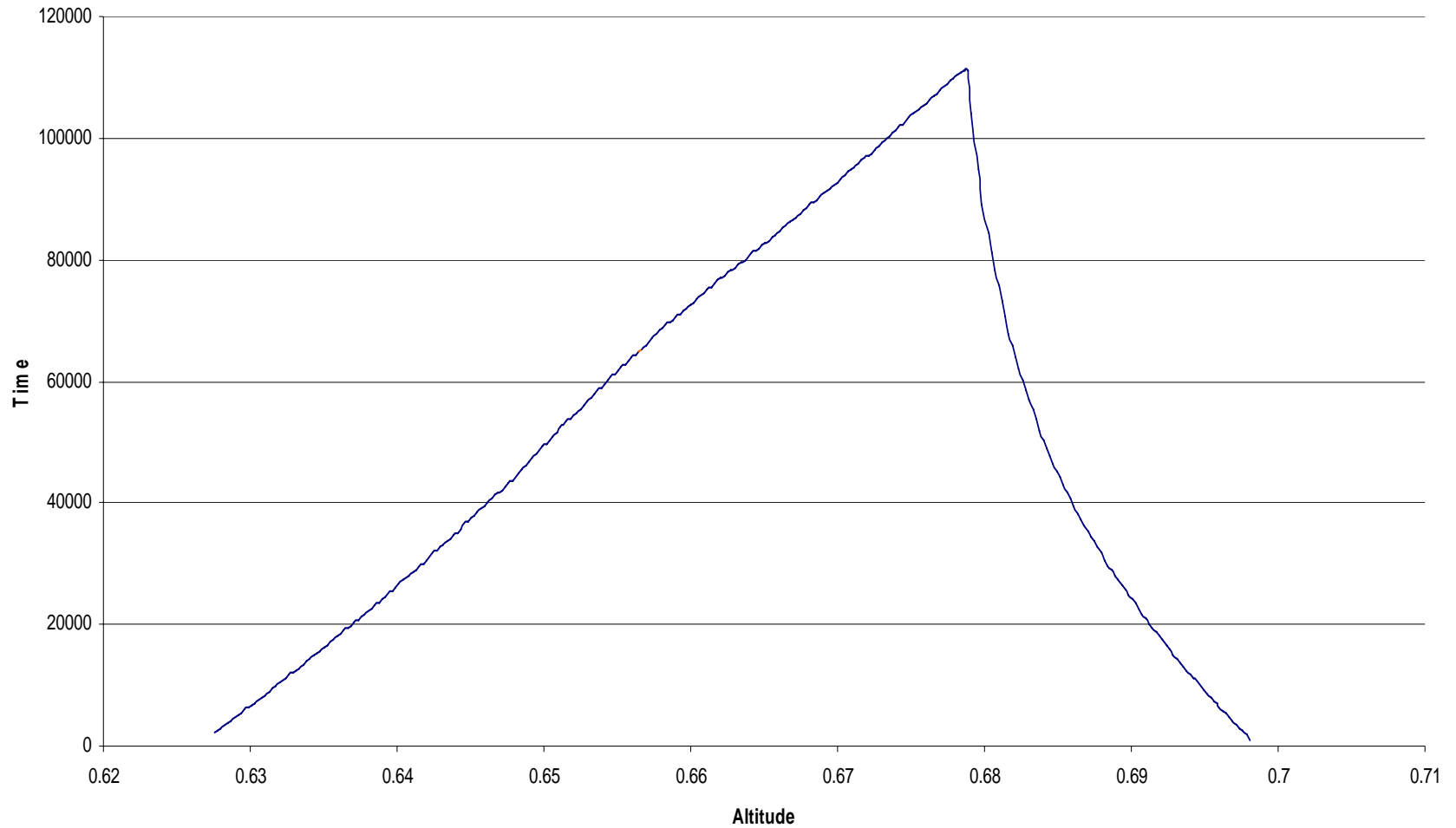
Testing

- Test Camera →
- Temperature Test
- Testing Solder Connections
- Pulse and Pause Testing



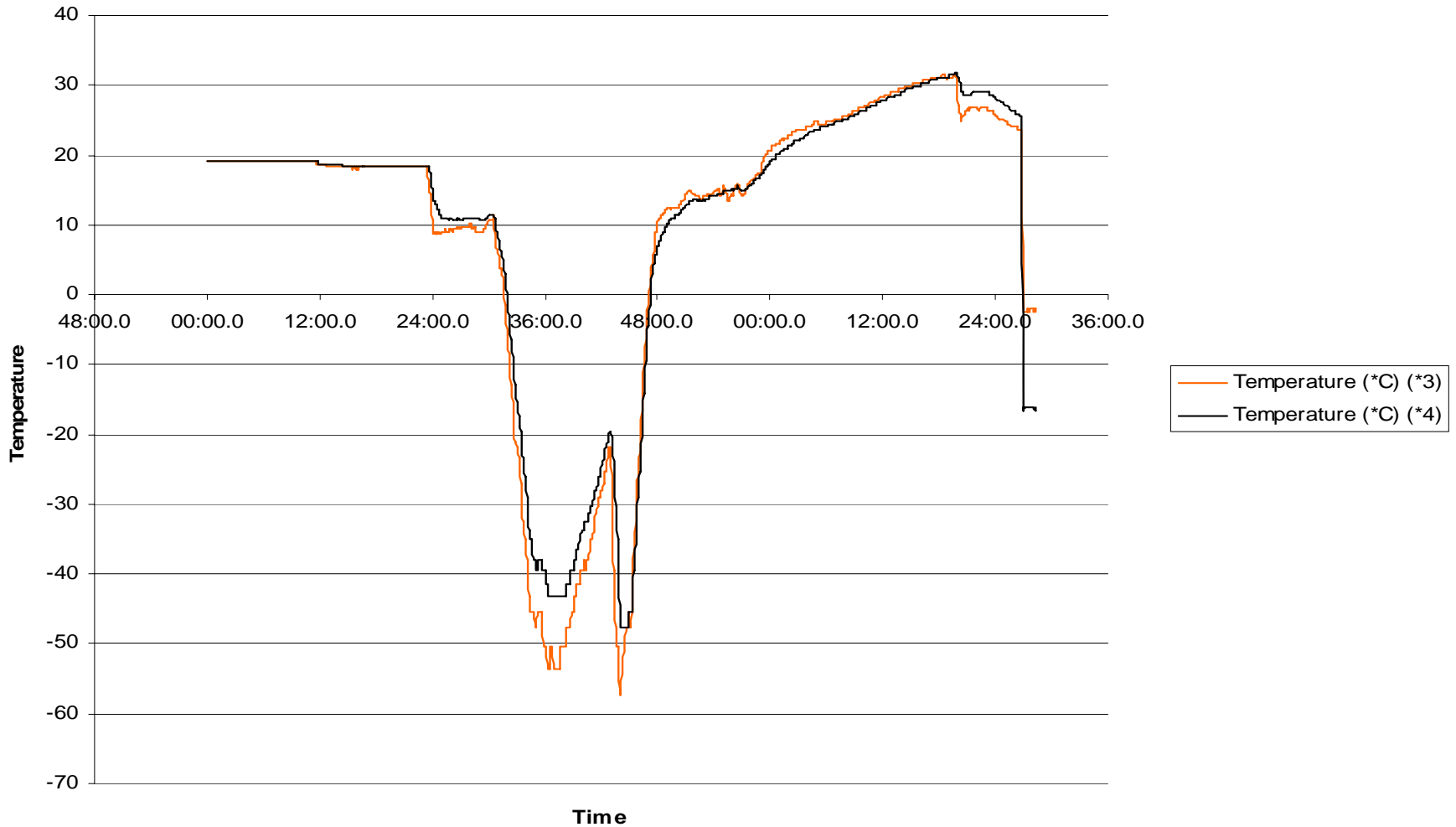
Altitude Data

Altitude vs. Time



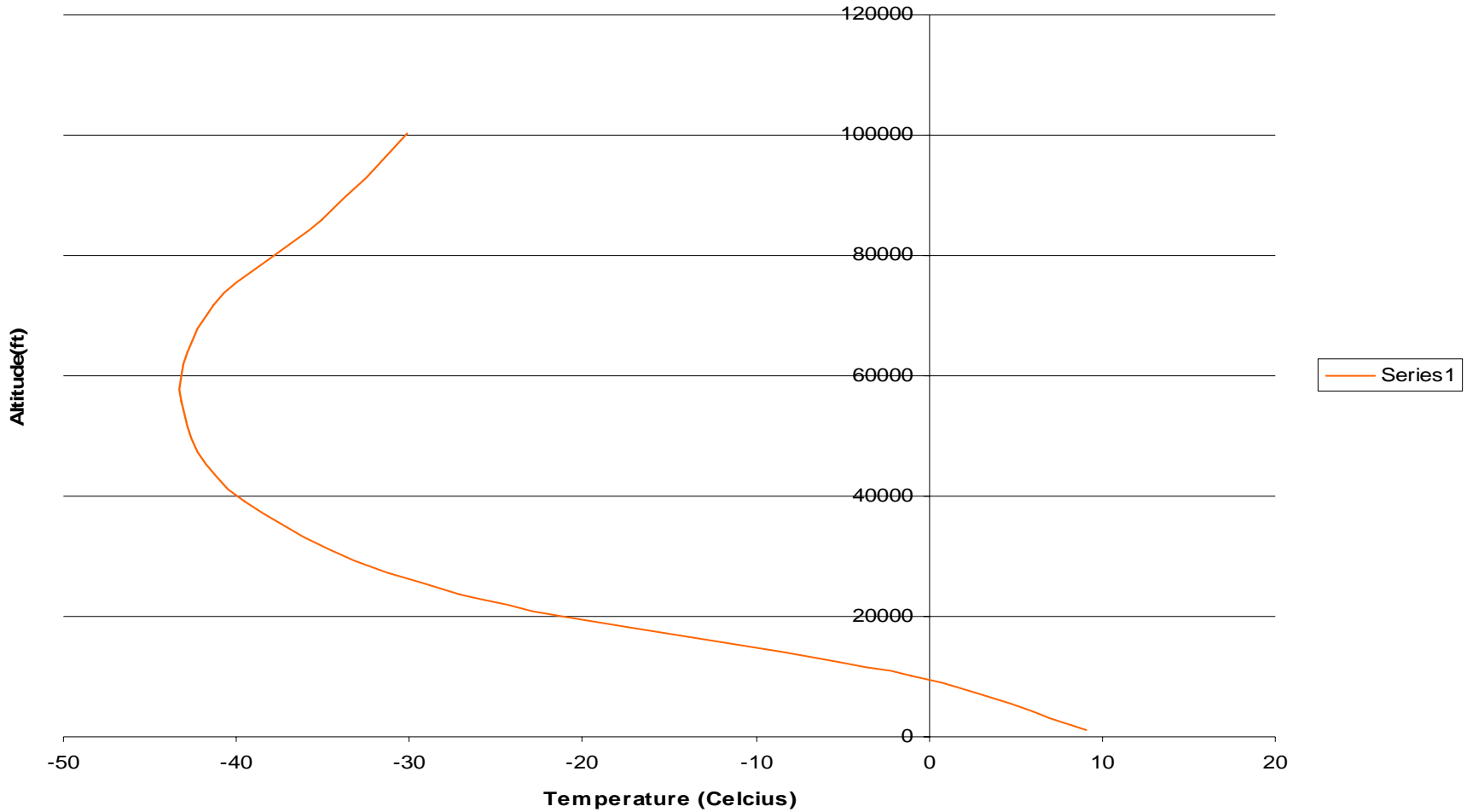
Temperature Data


Temperature vs. Temperature Sheided



Temperature Data


Altitude vs. Temperature

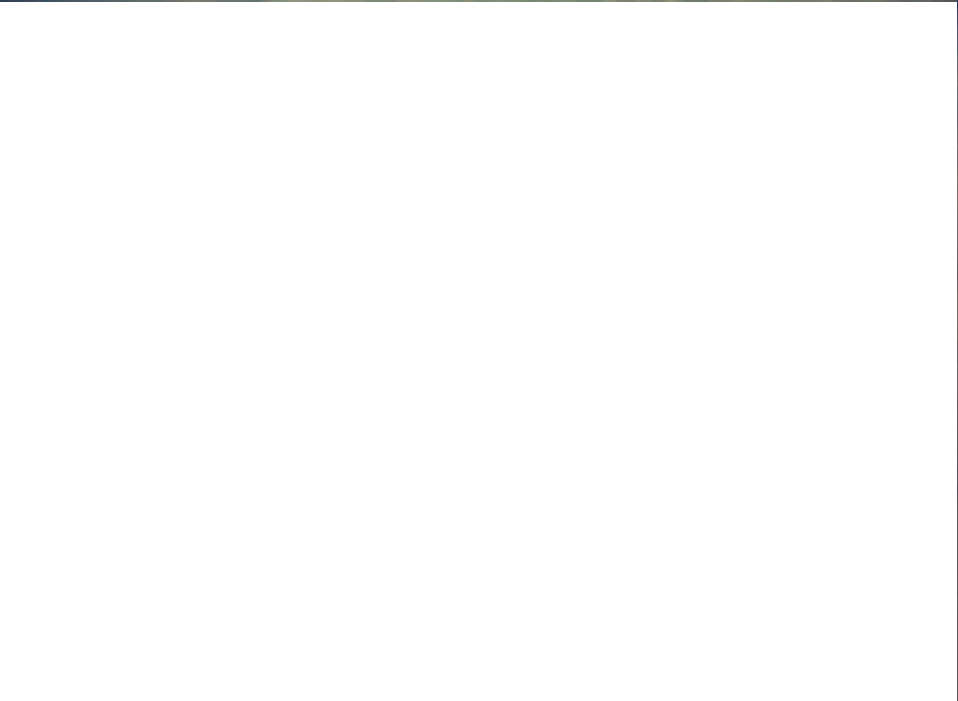


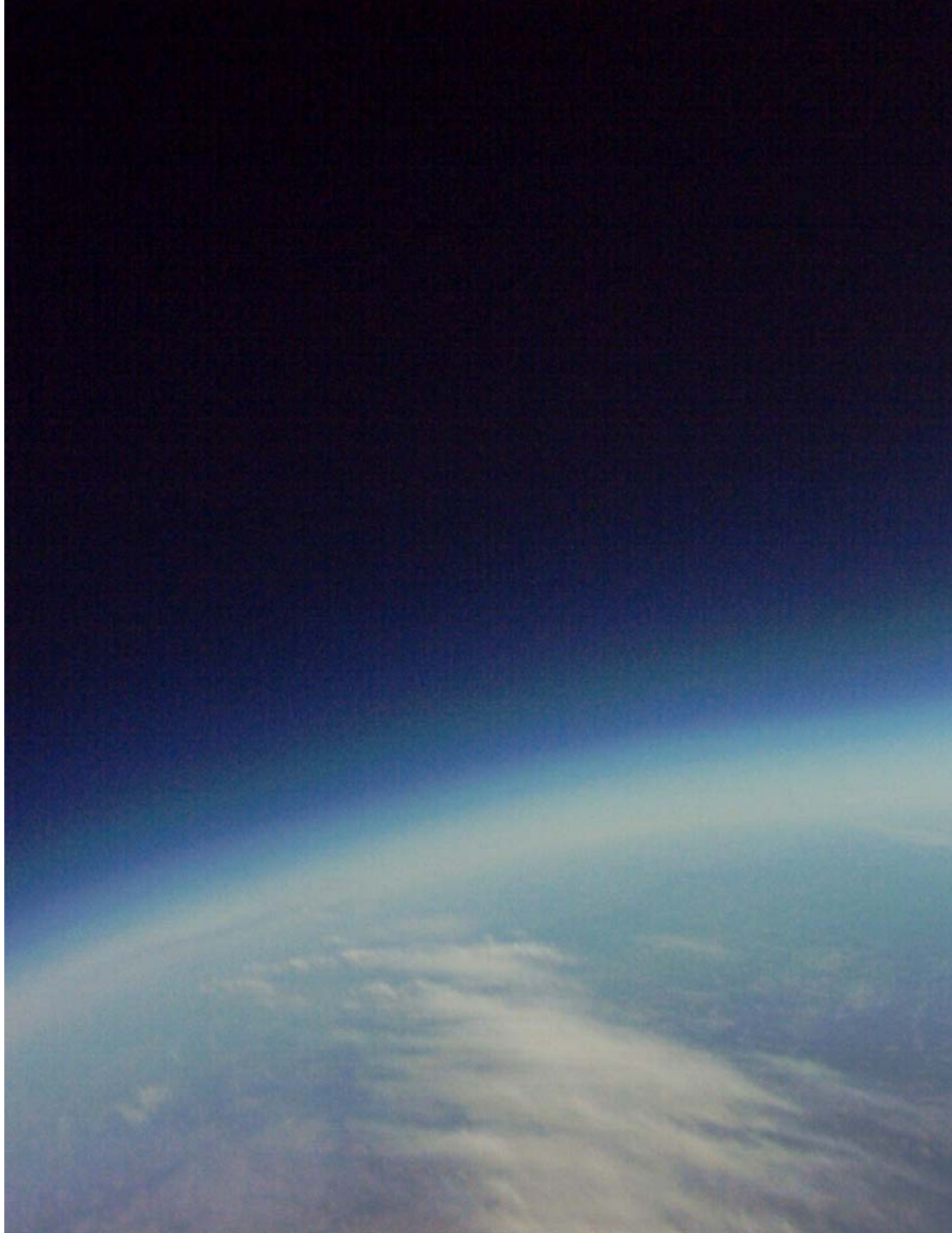


Payload Pictures

Mission Success!
Second Times the Charm







Lessons Learned

- We believe the complications at liftoff ripped the wire from beneath the screw holding it in place.
- A solution would be to solder the wire directly to the electrical platform rather than using the screw
- The camera needs a ball cap to reduce glare.



Conclusions

- Solar Flare can greatly affect the temperature.
- The flare can be shielded against.
- The stratosphere creates the greatest temperature skew due to the solar flare.
- This may be due to lack of ozone. (O_3)

End Credits

